

# Quick Start Guide for LPC1788 Touch Screen LCD Kit



Copyright ©2011, Future Designs, Inc., All Rights Reserved

**FDI** *Future Designs, Inc.*  
*Your Development Partner*  
2702 Triana Boulevard SW, Huntsville, AL 35805

## 1. Introduction

The DK-TS-KIT is optimized to save development time in typical embedded control applications. Its modular format uses a base carrier board, a core CPU DIMM board and an LCD carrier board. The base carrier board includes expansion connectors for added flexibility and a range of configurations.

This Quick Start Guide supports the following DK-TS-KIT part numbers:

- **DK-57VTS-LPC1788** 5.7" VGA Touch Screen LCD Kit for the LPC1788, Okaya PN: RV640480T-5X7WP or equivalent
- **DK-43WQH-1788** 4.3" WQVGA Touch Screen LCD Kit for the LPC1788, Hitachi PN: TX11D06VM2APA

## 2. Kit Contents

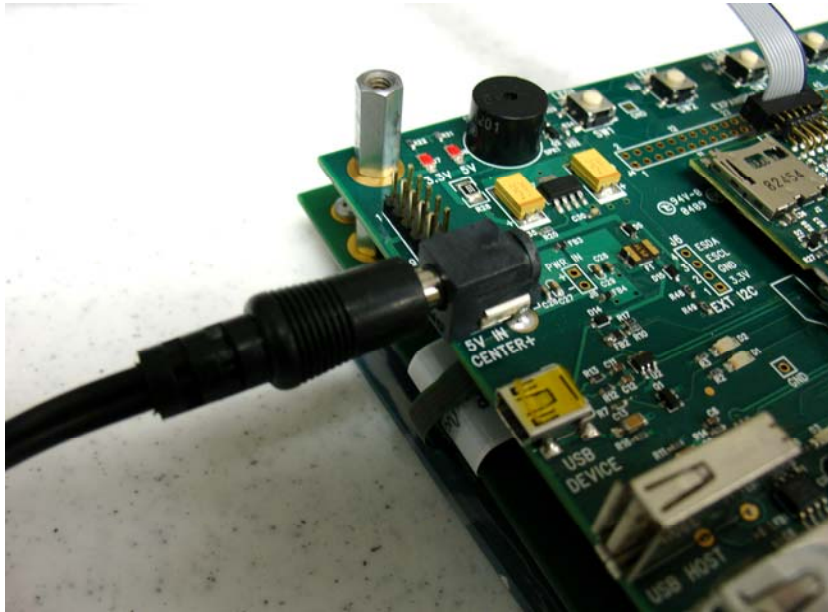
- DK-TS-LPC1788Touch Screen Kit with LCD
- 5V Power Supply
- Quick Start Guide
- Segger Mini-JTAG Debugger and FDI JLINK Adapter Board
- USB Flash Drive
- Ethernet Cable
- USB Cables (x2)

## 3. Startup Procedure

- A. Connect the USB Flash Drive (USB Host P1) provided with the kit. The flash drive contains the files required for the slide show to run. This will allow the slideshow to operate once the unit is powered up.



- A. Connect the included 5V power supply to the DK-TS-KIT power connector (P5). The power supply **MUST** be a regulated 5VDC, 2.1mm, center positive power supply. The use of **ANY** other power supply may result in damage to the kit and subsequently, void the warranty.



B. The following screens should appear once power has been applied to the kit:



C. At this point the unit is ready for software demonstrations.

## 4. Demonstration Software Main Menu

The Demonstration Software has the following options:

- **Slideshow**

Selecting the slideshow icon will cause the Flash Drive to be read. This will take several seconds and the LCD should show "Loading slideshow ....." This demonstration allows the user to manually scroll up and down

through the slide show by “dragging” a stylus or finger at least half way across the screen. To return to the main menu scroll back past the first slide, this will return you to the main menu. After approximately 30 seconds of no activity the slideshow will begin to auto scroll. The user can regain manual control at any time by “dragging” forward or backwards to the next slide.

The slideshow files can also be copied to a microSD card and executed from there. If no USB Flash Drive is loaded the software will then look for slideshow files on the microSD card.

### Slideshow customization:

For best results, always use caps in the filename. Images must be in 24 bit uncompressed Targa (.TGA) format. Adobe Photoshop and many other graphics programs can save images in this format.

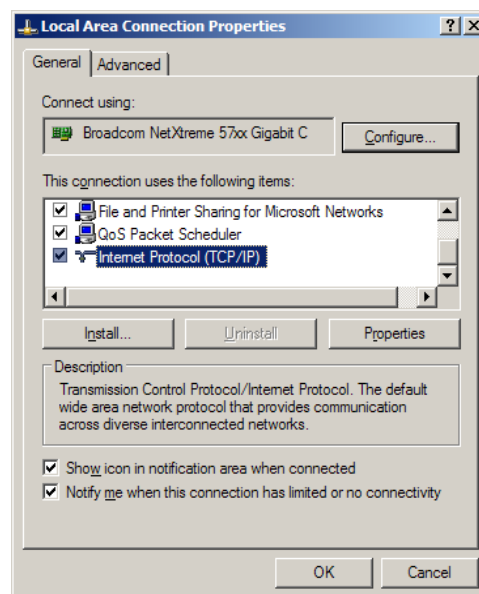
When using DK-TS KIT’s with a VGA LCD (e.g. DK-TS-57VTS-LPCxxxx), the images must be 640x480 in size and use the file names VSLIDE01.tga, VSLIDE02.tga, VSLIDE03.tga, etc. There is a limit of 8 slides in a VGA slideshow.

- **Draw**

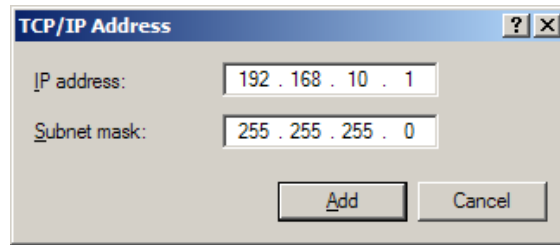
A very simple art program is provided. Use the touch screen to draw lines in the box to the right. Clicking on **Color** allows the color to be changed between various options. Hint – use black to erase. **Save** stores the graphic image as the file IMAGE.RAW on the USB Flash Drive. **Load** recalls the saved graphic image from the USB Flash Drive. If the USB Flash Drive is not present then the unit will look for the file on the microSD card and respond with an error message if neither file medium is present.

- **Console**

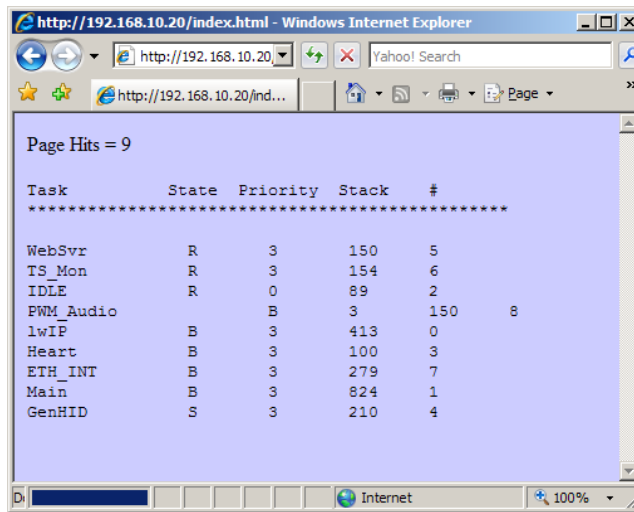
Presents an output screen showing what a remote user sees when Telnetting into the console. Connect the Ethernet cable provided in the kit to the Ethernet port (J5) on the DK-TS-Kit. On a Windows PC, configure the PC for a static IP address of 192.168.10.20 as follows. On the PC start by going to the **Control Panel** and select **Network Connections**. Then double click the **Local Area Connection** (or similarly named) and click **Properties**. The following dialog should appear. Scroll down to “Internet Protocol (TCP/IP)”, select, and then click **Properties**.



On the next screen, the computer needs to be set to a static IP number. Enter the current IP address, subnet mask, default gateway, and DNS servers (enter the command “ipconfig /all” at a CMD window to get this information). Then click **Advanced** and then click **Add...** and enter the following information and then click **Add**. Click **OK**. Click **OK**.

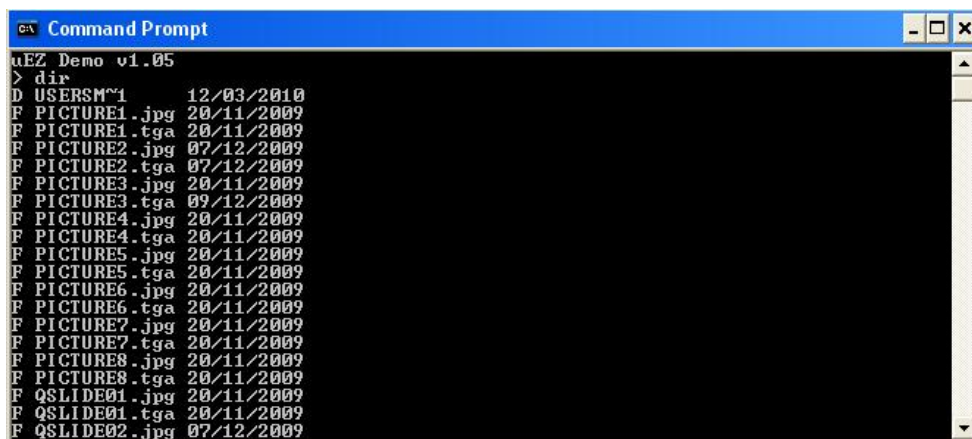


Open an internet browser and go to <http://192.168.10.20> and watch the output. It should appear as follows:



You should see that the “Page Hits” total is incrementing along with other parameters listed under the task column.

Now open a CMD window and type “telnet 192.168.10.20” to connect to the DK-TS-KIT. Type “dir” to show the contents of the Flash Drive that is plugged into the DK-TS-KIT. Type “quit” to disconnect. You should also see the same results on the DK-TS LCD screen.



- **Time & Temperature**

Selecting this icon will launch a new screen that shows the temperature from the LM75 temperature sensor on the CARRIER board, and the current time and date from the external Real Time Clock (RTC). To return to the main menu touch the exit icon. Touch “Time” to advance to the “Set Time” screen and set or update the time as necessary. Touch “Date” to advance to the “Set Date” screen and set or update the date as necessary. Once set an on-board super cap will back-up the time and date for several days (typically) if the unit is powered off.

- **Accelerometer**

Selecting this icon demonstrates the accelerometer feature by moving a simulated ball across the screen as the CARRIER board is tilted along the X and Y axis. To return to the main menu touch the exit icon.

### **Settings**

Selecting this icon brings up a submenu screen that contains a **Calibrate** icon, a **Functional Test** icon, and a **FCT Loopback** icon. The Calibrate icon does a simple calibration of the LCD screen. The Functional Test provides a step by step test of all basic features of the DK-TS-KIT. The FCT Loopback puts the unit into a mode that will communicate with another DK-TS-KIT requiring specific cables and setup as defined in the SOMDIMM-LPC1788 Users Manual. These features are normally used for functional testing as described in the SOMDIMM-LPC1788 Users Manual available at <http://www.teamfdi.com/development-tools-kits/>

## **5. Additional Documentation and Software Updates**

Complete Users Manuals, Schematics, and documentation are available on the Flash Drive provided in the DK-TS-KIT and are also available from the following websites (please refer to the websites for the latest updates):

- [www.teamfdi.com/dk-ts-kit](http://www.teamfdi.com/dk-ts-kit)
- Segger Mini-JTAG Debugger
  - <http://www.segger.com/cms/jlink-software.html>