

Many of the Derivative Boards have a power measurement jumper, JP1. In the artwork pin 1 of JP1 is shorted to pin 2 of JP1 so the boards are continuously powered. If the user wants to measure power consumption of the microcontroller the board can be easily modified.

Use the following instructions to load a header in JP1 for easy power measurement.

1. For the desired Derivative Board cut the trace between pins 1 and 2 of JP1 as shown in Figure 1. The DB-TSSOP-LPC922 board is shown for reference but JP1 is the same on all of the Derivative Boards.

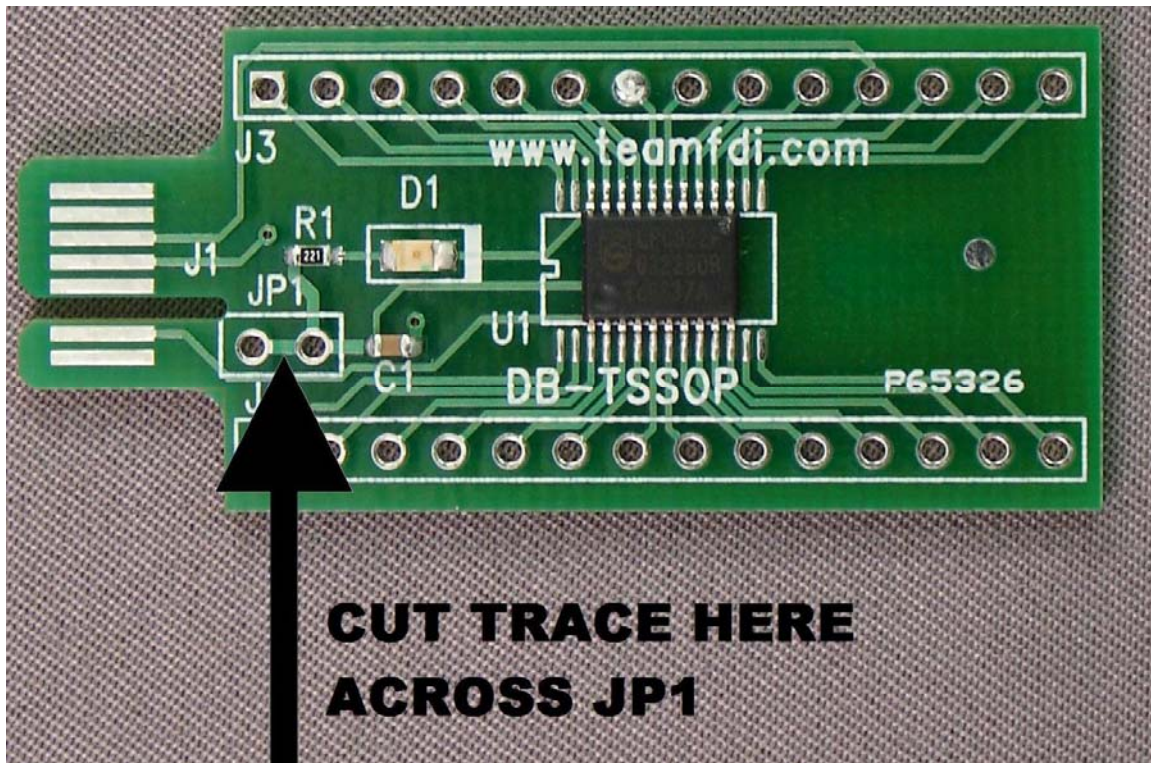
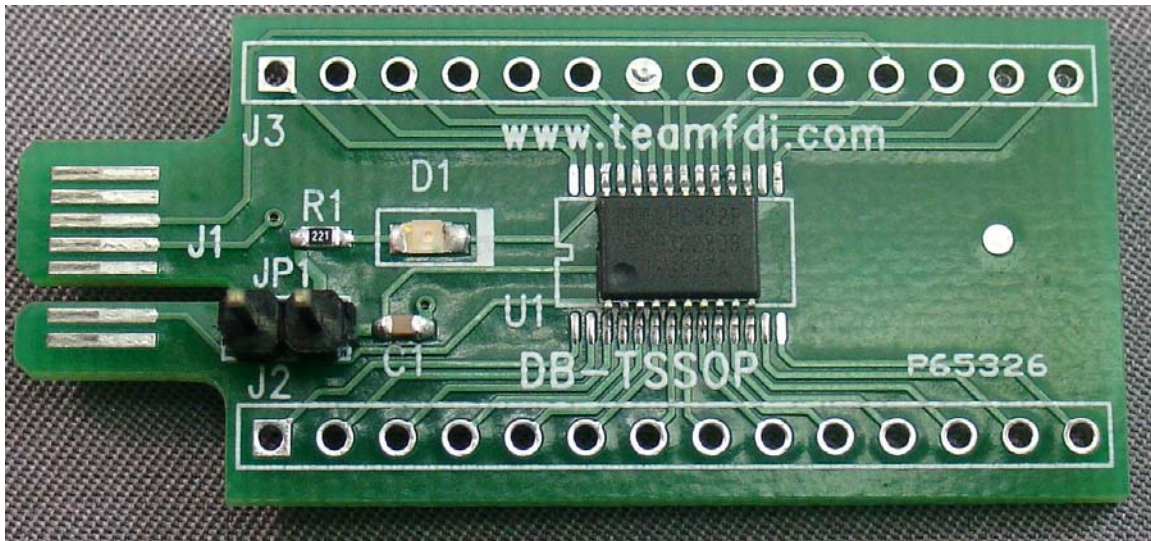


Figure 1

2. Solder a 2-pin standard 0.10" header into JP1. As shown in Figure 2.



**Figure 2**

Load a standard shunt across JP1 to power the board or use a Digital Multi Meter to measure the current flowing through JP1 to the board.