

USB Dongle

Update Tool User's Guide

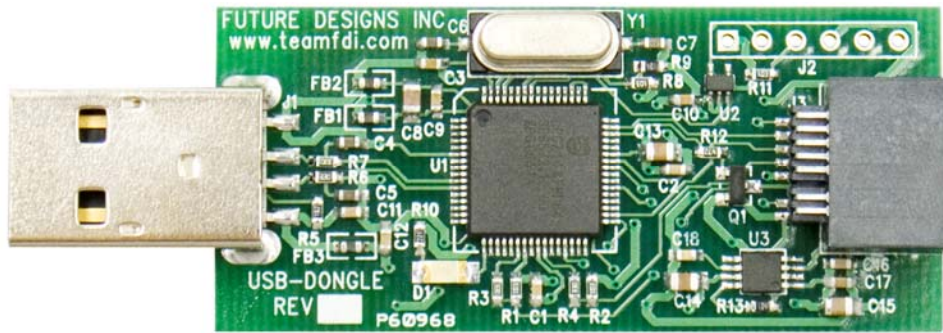


Table Of Contents

1.0	Introduction.....	3
2.0	Using the USB-Dongle Update Tool.....	3
3.0	Troubleshooting the USB Dongle Update Tool.....	4

Information in this document is provided solely to enable the use of Future Designs products. FDI assumes no liability whatsoever, including infringement of any patent or copyright. FDI reserves the right to make changes to these specifications at any time, without notice. No part of this document may be reproduced or transmitted in any form or by any means, electronic or mechanical, for any purpose, without the express written permission of Future Designs, Inc. 2702 Triana Boulevard, Huntsville, AL 35805

NOTE: The inclusion of vendor software products in an FDI kit does not imply an endorsement of the product by Future Designs, Inc.

© 2007 Future Designs, Inc. All rights reserved.

Microsoft, MS-DOS, Windows, Microsoft Word are registered trademarks of Microsoft Corporation
Other brand names are trademarks or registered trademarks of their respective owners.

Revision 1, 5/8/2007 5:49:00 PM
Printed in the United States of America

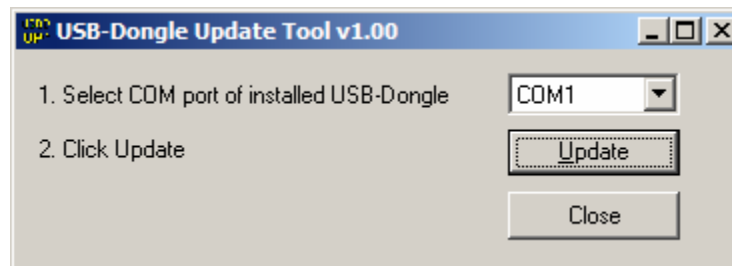
1.0 Introduction

The USB-Dongle is a versatile tool for accomplishing multiple tasks: ISP, ICP, & I2C. As features are made available, the USB-Dongle will be need to be upgraded. The USB-Dongle Update Tool automates this task in a safe and easy method. The following contains step by step instructions on using the tool along with a list of potential error messages and what can be done to fix the problem.

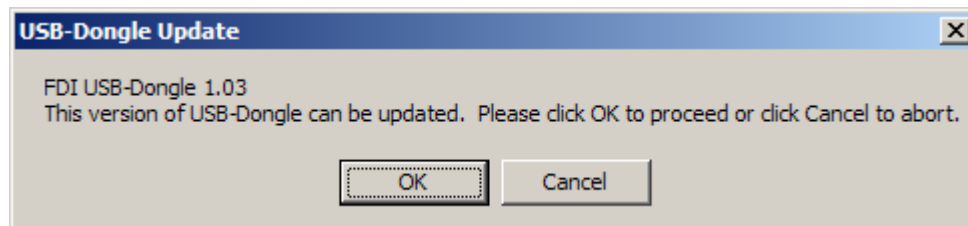
2.0 Using the USB-Dongle Update Tool

The USBDongleUpdate tool works by connecting to the USB-Dongle through the Virtual COM port and entering the IAP Boot loader. The included file "update.bin" is the raw image stored in the USB-Dongle's application area. If the application area is corrupted, the boot loader will always take control of the USB-Dongle and setup a Virtual COM port.

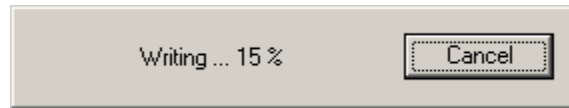
- 1) To start an upgrade, run the program USBDongleUpdate.exe.



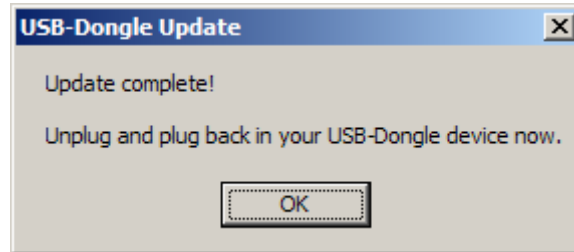
- 2) To start an upgrade, run the program USBDongleUpdate.exe.
- 3) Select the COM port of the Virtual COM port. See the User's Guide for details on how to determine which USB port this is.
- 4) If everything goes as expected, the version will be reported and a choice to continue or cancel is given.



- 5) Click **OK** to start the update.
- 6) The status is then displayed with an option to cancel the update. **NOTE:** If you cancel at this point, the application stored in the flash image will be corrupted and you will have flash the device again.



7) When completed, you will see the following dialog,



8) The USB-Dongle is now updated and restarted.

3.0 Troubleshooting the USB Dongle Update Tool

The following table provides information about possible errors and what should be done.

Error Message	Reason	Solution
Cannot [re-]open COM port!	COM port does not exist.	Nothing exists on that port. Check that the USB-Dongle is properly inserted and choose a different COM port.
COM port in use elsewhere or access denied!	COM port is currently open by another application.	Find other program that has the COM port open. NOTE: Some applications automatically take the first COM port available such as PDA synchronization software.
Timeout! USB-Dongle is not responding. Are you using the correct port?	Communications are not being properly returned on the given COM port.	The chosen COM port may be a real COM port but it is not to a USB-Dongle. Make sure the chosen COM port is correct.
USB-Dongle incorrectly reported type. Reset USB-Dongle and try again.	Communications are occurring with the target device, but unexpected data was returned.	The chosen CM port may not be a USB-Dongle. Check that the chosen COM port is correct. If this problem keeps occurring, call or Email technical support.
This is an old version of the USB-Dongle dongle that cannot be upgraded. Please return to FDI.	The chosen unit is too old to upgrade.	Contact sales to receive the newest device.
Aborting update! - or - Error! USB-Dongle update cancelled. NOTE: USB-Dongle is in unknown state!	User has cancelled update of firmware.	Run USB-Dongle Upgrade Tool again to update the firmware correctly.
Could not find UPDATE.BIN! Aborting!	Support file "update.bin" is not in the same directory as USB-Dongle.	The files are incomplete. Download the latest from the website again.
Error! USB-Dongle cancelled transfer. Transfer aborted!	The update.bin file is incorrect for flashing.	Download the tool and a proper update.bin file.