

# XTEND-SCC *Development Kit*



## XTEND

**X**A  
**T**rainer &  
**E**xpandable  
**N**arrative  
**D**esign

The *XTEND*, XA Trainer and Expandable Narrative Design, is designed to provide the user with a stable hardware and software platform for application development with the XA-SCC. In many cases the *XTEND* may serve as a quick prototype for the actual user application. With the on-board prototype area or optional physical interface modules, the user can quickly and easily get a new customized design running with the XA-SCC.

### *Highlights*

- Quick Start kit for any XA-SCC Design
- Why “re-invent” when you can just “re-use”
- Less than 20 minutes to
  - ◆ Load the software
  - ◆ Setup the board
  - ◆ Start designing
- Kit includes everything you need
  - ◆ XA-SCC Board
  - ◆ Software
  - ◆ Documentation
  - ◆ Schematics
  - ◆ Power Supply
  - ◆ Serial Cable
- Optional Physical Interface Modules

# Specifications

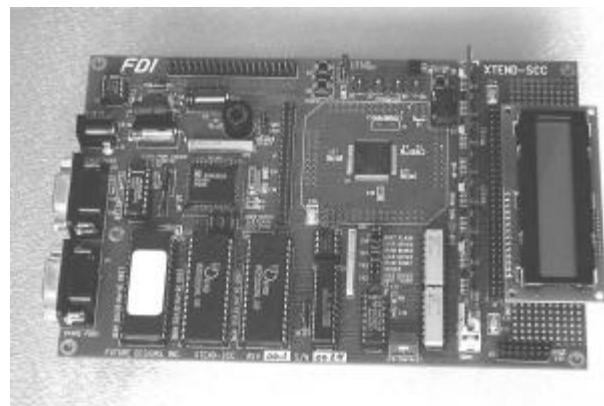
- Philips XA-SCC Microcontroller utilizing 100-pin LQFP package
- 64KB Standard FLASH ROM Code Space, expandable to 1MB
- Code Space supports EPROM, FLASH (5V), NVSRAM, or SRAM
- 4MB EDO SIMM in 72-pin DRAM SIMM Socket (supports 1MB to 16MB of EDO or FPM DRAM)
- Optional High-Speed Data Space SRAM, expandable to 512KB
- Interface for character type LCD modules with 16 character LCD included
- 60-pin Expansion Header for Full Expansion Capability (16MB memory and I/O support)
- 9 VDC Input with on-board 5V power supply, UL Approved Wall Supply included
- 5.0" x 7.5" 4-layer PCB with Full Silkscreen Information
- 1.25" x 4" wire-wrap area on-board
- On-board speaker for tone generation
- Users manual and schematics included
- On-board DUART provides two DB-9 RS232 Serial Communications Ports, RS232 Cable and DB25 Adapter Included
- Two user input pushbuttons
- Four user controlled LEDs
- Example Routines for Applications
  - ◆ XA-SCC Initialization Routines
  - ◆ Serial Port Drivers
  - ◆ Timer/Counter Drivers
  - ◆ Watchdog Timer Setup
  - ◆ Interrupt Routines
- Tasking XA Toolchain Demo for Windows
  - ◆ Tasking Embedded Development Environment
  - ◆ XA C-Compiler Demo
  - ◆ Crossview Debugger Demo with ROM Monitor pre-programmed
- CMX RTOS Information Package
- Philips XA Assembler, Simulator and 8051 to XA Translator
- Optional Physical Interface Modules Include:
  - ◆ Multiprotocol Serial Module (MSM)
  - ◆ Simple Serial Module (SSM) for RS232

# Ordering Information

Part Number: XTEND-SCC  
Price: \$449.00 (USD)  
Warranty: 30-day money back guarantee  
Availability: Stock  
Philips 12NC: TBD

(256) 830-4116 Information  
(800) 278-0293 Sales  
(256) 830-9421 FAX  
e-mail [sales@teamfdi.com](mailto:sales@teamfdi.com)  
[www.teamfdi.com](http://www.teamfdi.com)

Future Designs, Inc.  
P.O. Box 7362  
Huntsville, AL 35807



**XTEND-SCC Board**