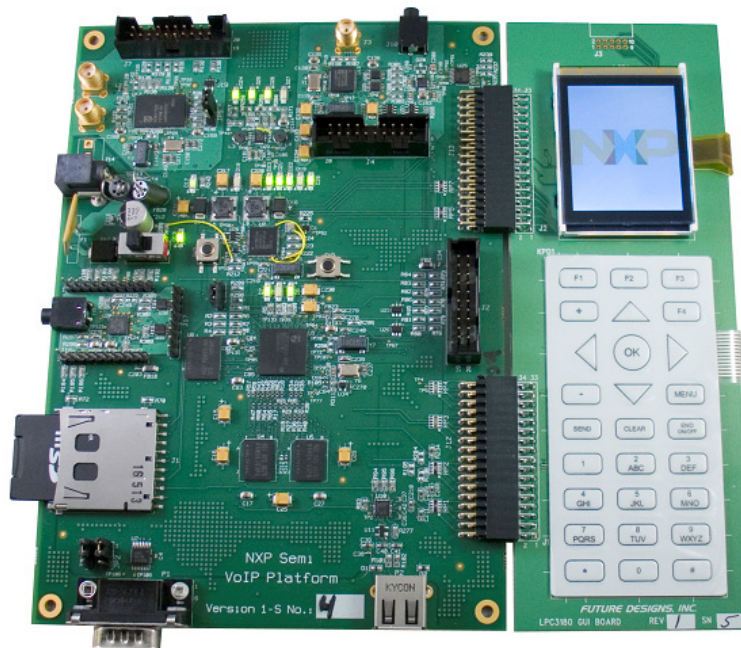


# ***LPC3180 Development Kit***

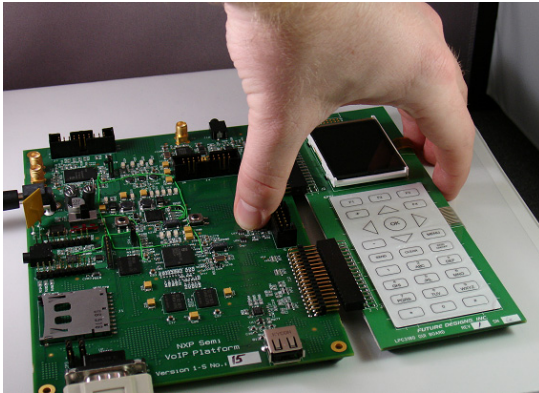
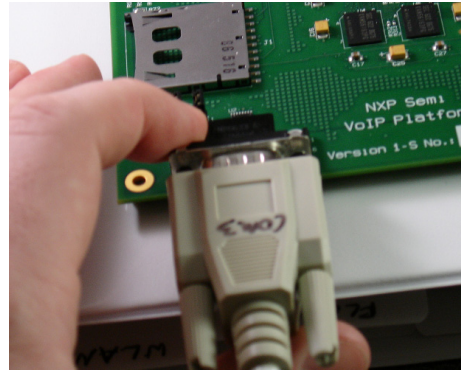
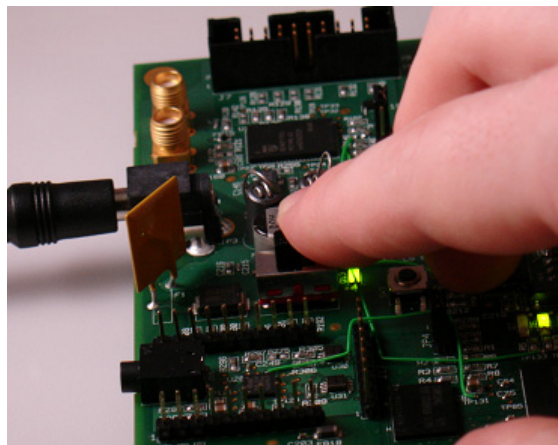
## ***QuickStart Guide***



## 1.0 Hardware Setup

The list below outlines the necessary steps for getting the LPC3180 and optional GUI board up and running. Images are provided where necessary as visual aides to the setup process.

1. Place LPC3180 and GUI boards on a flat surface.
2. OPTIONAL: Connect GUI board to LPC3180 board by lining up connectors J12 and J13 of the LPC3180 board with connectors J1 and J2 of the GUI board, respectively. Push the boards together until a complete connection is made (see Figure 1).
3. Connect Condor Power supply from wall outlet to P3 on the LPC3180 board (see Figure 3).
4. Setup serial connection and HyperTerminal as described in section **Error! Reference source not found.** (see Figure 2).
5. Toggle switch SW1 to provide power to the board(s) (see Figure 3). Text should be immediately visible in the HyperTerminal window and on the LCD panel (if connected).

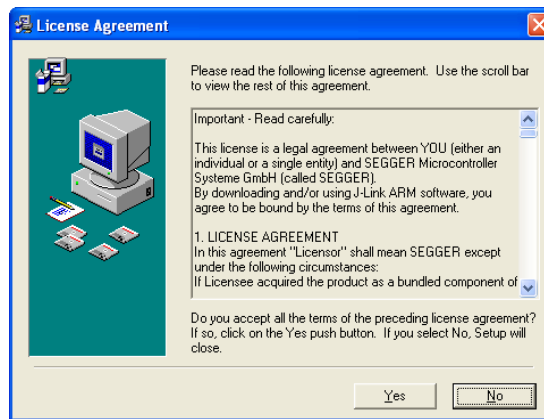
**Figure 1: GUI Board Connection****Figure 2: Serial Connection****Figure 3: Power Switch**

## 2.0 Software Installation

**NOTE:** This section assumes the J-Link Commander tool is being used to download images into the LPC3180's NAND flash.

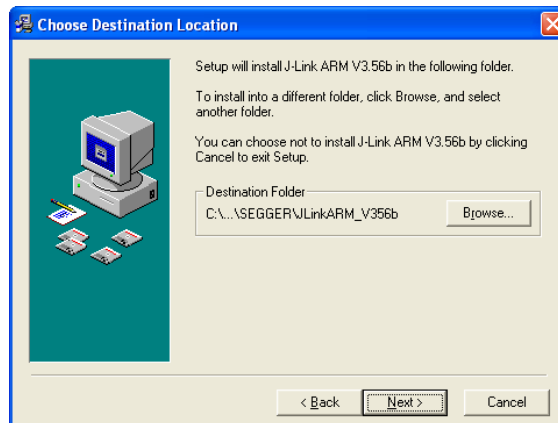
### 2.1 Host PC

To download images into the LPC3180 board's NAND flash, the J-Link Commander tool should be used. To install this product, double-click on the "Setup\_JLinkARM\_V356b.exe" file included on the software CD. After executing the file, the user will be prompted with the install wizard. Click "Next" to advance to the License Agreement:



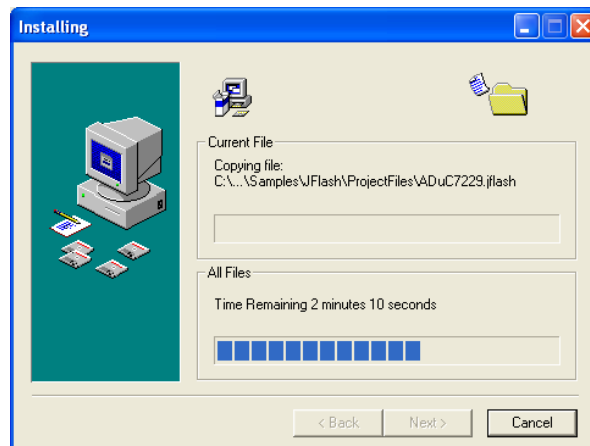
**Figure 4: JLink License Agreement**

Click “Yes” to agree to the license and “Next” to advance to the “Destination Location” window. The software should be installed in C:\Program Files\SEGGER\JLinkARM\_V356b. Batch files included on the software CD reference the binary at this location. Therefore, if this installation path is modified the batch files must be updated with the new path:

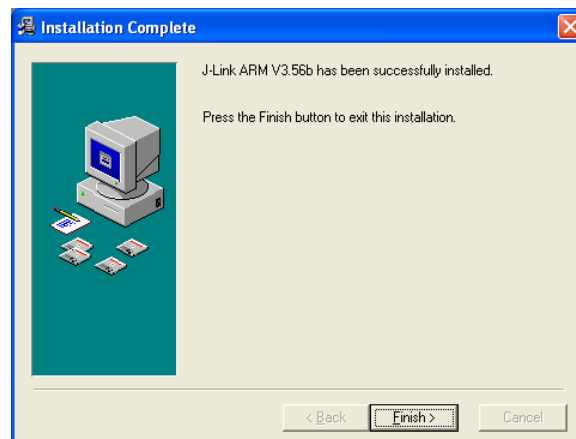


**Figure 5: Destination Location**

Click “Next” and “Next” again to begin the installation process. The install process will be reflected as files are copied to your machine:

**Figure 6: Install Progress**

Finally, click “Finish” to end the installation. Shortcuts should now be placed on your desktop which will allow you to open JLink Commander and run the programming scripts.

**Figure 7: Finish Installation**