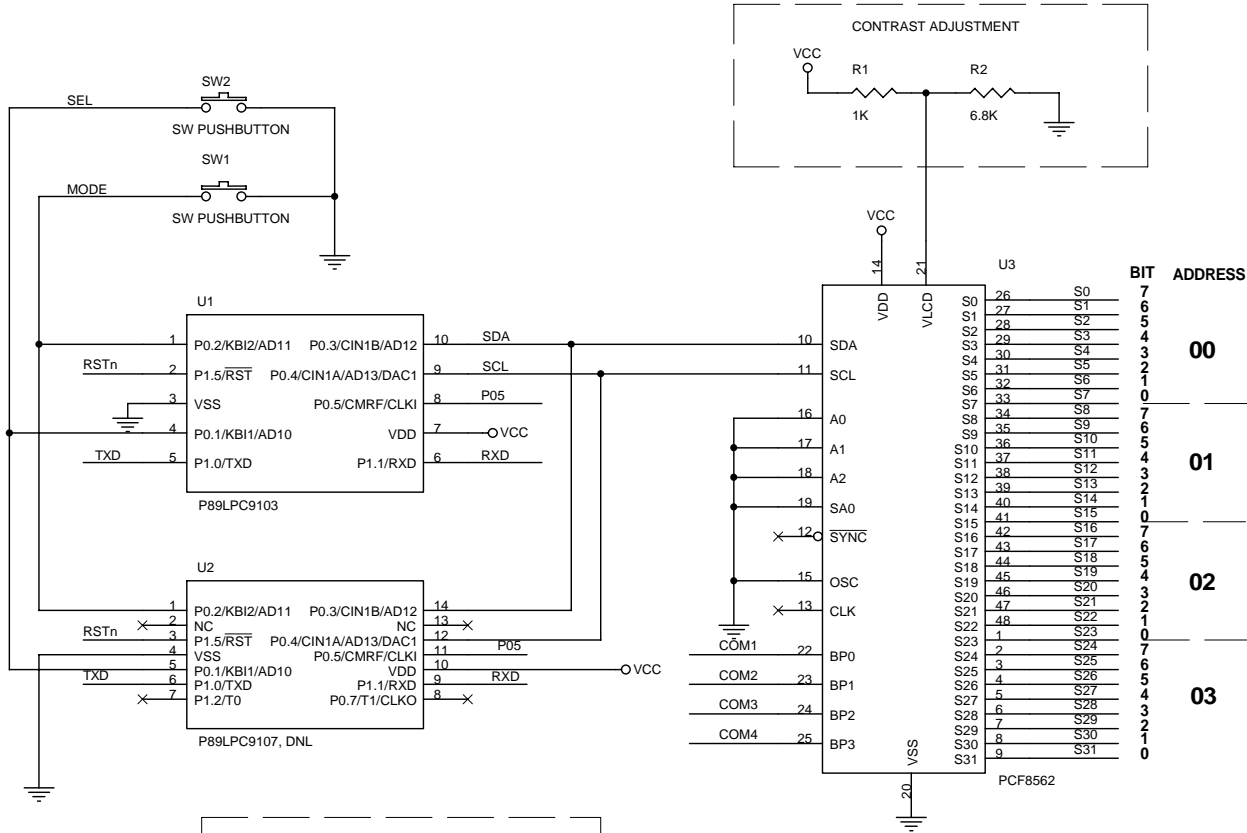


REVISION HISTORY		
REV	DATE	DESCRIPTION
0	4/29/05	INITIAL RELEASE, 4-DIGIT
1	6/3/05	CHANGE TO 8-CHAR, RE-LAYOUT
2	6/17/05	BTN TO 932, CONTRAST VALUES, 10PIN P1



REV	DATE	DESCRIPTION
0	4/29/05	INITIAL RELEASE, 4-DIGIT
1	6/3/05	CHANGE TO 8-CHAR, RE-LAYOUT
2	6/17/05	BTN TO 932, CONTRAST VALUES, 10PIN P1

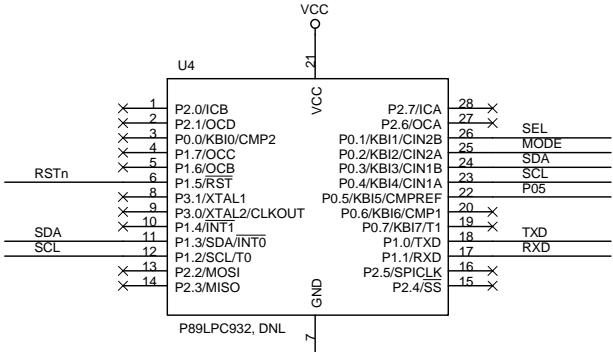
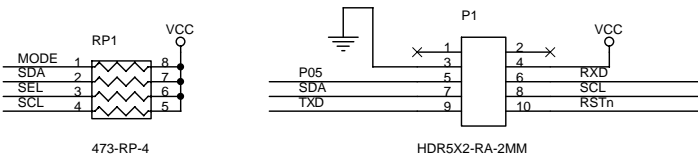
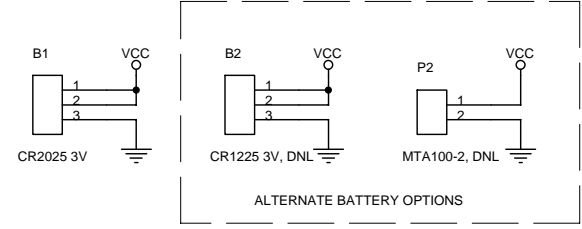
BIT	ADDRESS
7	00
6	01
5	02
4	03

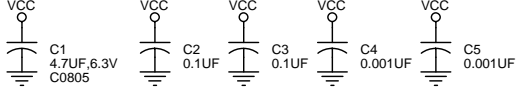
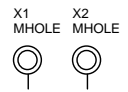
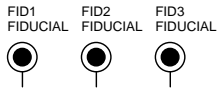
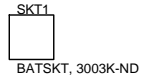
Pin	Label
S29	8H/8G/8L/8M
S28	8A/8B/8C/8DP
S27	7H/7G/7L/7M
S26	7A/7B/7C/7DP
S25	6H/6G/6L/6M
S24	6A/6B/6C/6DP
S23	5H/5G/5L/5M
S22	5A/5B/5C/5DP
S21	4H/4G/4L/4M
S20	4A/4B/4C/4DP
S19	3H/3G/3L/3M
S18	3A/3B/3C/3DP
S17	2H/2G/2L/2M
S16	2A/2B/2C/2DP
S15	1H/1G/1L/1M
S14	1A/1B/1C/1DP
S13	COM1
S12	COM2
S11	COM3
S10	COM4
S9	COM1
S8	COM2
S7	COM3
S6	COM4
S5	COM1
S4	COM2
S3	COM3
S2	COM4
S1	COM1
S0	COM2



LCD1  
LCD-8CHAR, PD-878



I2C HERE FOR COMPATIBILITY AND ICP



**FUTURE DESIGNS, INC.** www.teamfdi.com

Title: PHILIPS LCD DEMO

Size: Document Number \_\_\_\_\_ Rev 2

Date: Friday, June 17, 2005 Sheet 1 of 1