

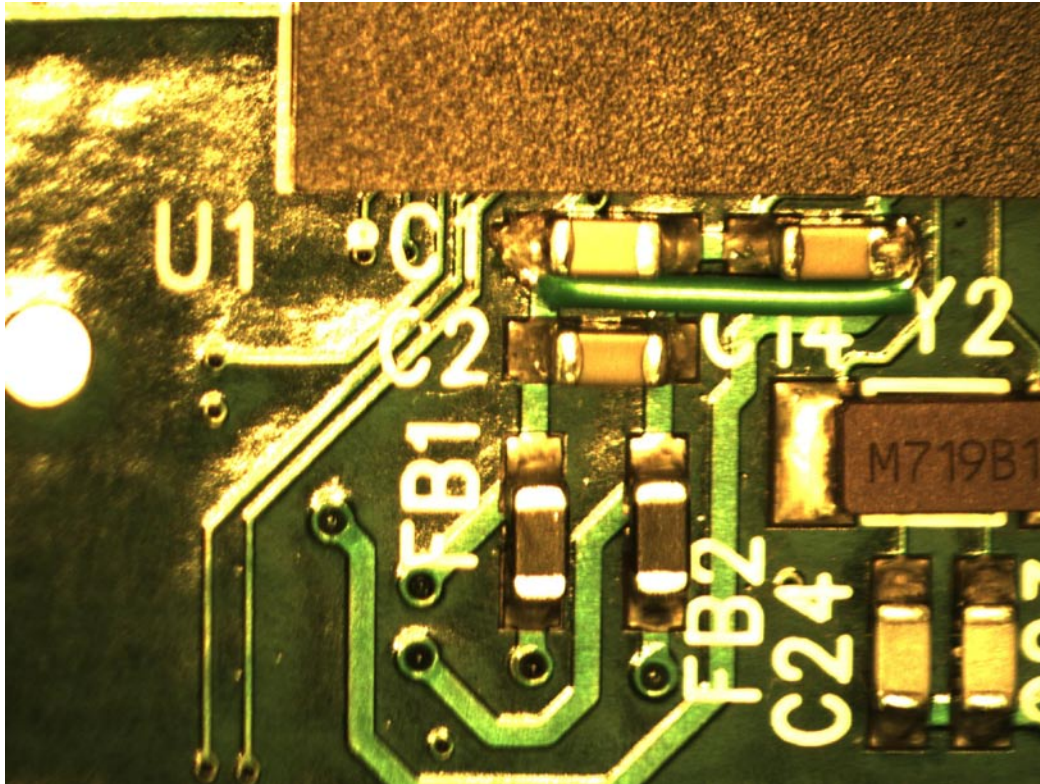
FDI	ENGINEERING CHANGE ORDER		ECO NO: 09-000.1
			Page 1 of 1
TITLE	DWG NO.	CURRENT REV	NEW REV
ARM7DIMM LPC2478	ARM7DIMM	2.0	2.1

BACKGROUND:

The ADC Vref pin is not connected to a source, hence the ADCs do not function.

DESCRIPTION OF CHANGE:

1. Add wire from right side of C14 to left side of C1 as shown below;



Reason for change: 1. Correction for Vref connectivity		Disposition/Effectively	
		Use as is	
		Rework to ECO	X
		Scrap & Rebuild	
		Record Change Only	
Prepared by:	M. Hall	Date:	03/27/09
Approved by:		Date:	
Approved by:		Date:	
Approved by:		Date:	

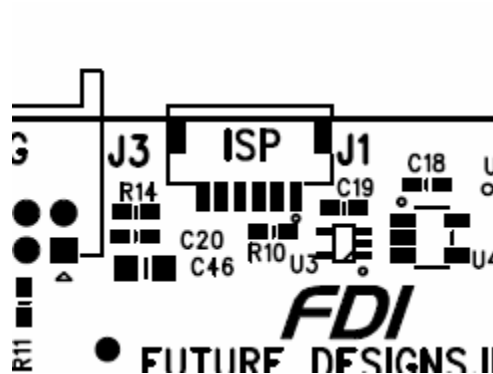
FDI	ENGINEERING CHANGE ORDER		ECO NO: 09-000.2
			Page 1 of 1
TITLE	DWG NO.	CURRENT REV	NEW REV
ARM7DIMM LPC2478	ARM7DIMM	2.1	2.2

BACKGROUND:

The ISP connector is needed for functional test and ease of customer reprogramming of the CPU

DESCRIPTION OF CHANGE:

1. Load J1 with FDI PN: J500030 (JST SM06B-SHLS-TF)



Reason for change: 1. Load J1		Disposition/Effectively	
		Use as is	
		Rework to ECO	X
		Scrap & Rebuild	
		Record Change Only	
Prepared by:	M. Hall	Date:	03/27/09
Approved by:		Date:	
Approved by:		Date:	
Approved by:		Date:	

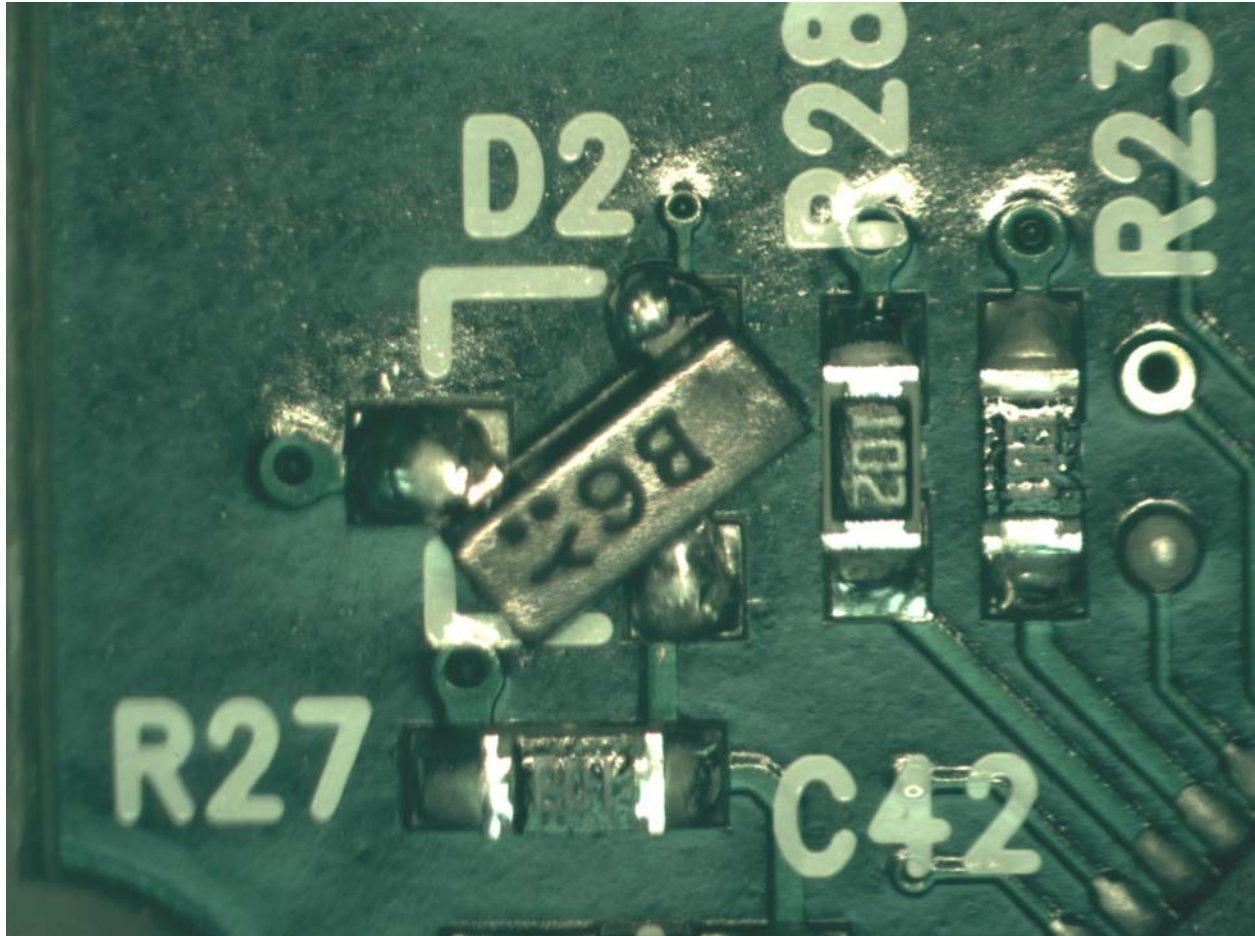
FDI	ENGINEERING CHANGE ORDER		ECO NO: 09-002
			Page 1 of 1
TITLE	DWG NO.	CURRENT REV	NEW REV
ARM7DIMM LPC2478	ARM7DIMM	2.2	2.3

BACKGROUND:

The Ethernet PHY was intermittent and would powerup at different addresses. It was determined that the reset circuit was not functioning properly due to improper footprint for D2.

DESCRIPTION OF CHANGE:

1. Rotate D2 diode 120 degrees counter-clockwise



Reason for change: 1. Correction for incorrect SOT23 footprint of D2		Disposition/Effectively	
		Use as is	
		Rework to ECO	X
		Scrap & Rebuild	
		Record Change Only	
Prepared by:	M. Hall	Date:	03/27/09
Approved by:		Date:	
Approved by:		Date:	
Approved by:		Date:	