

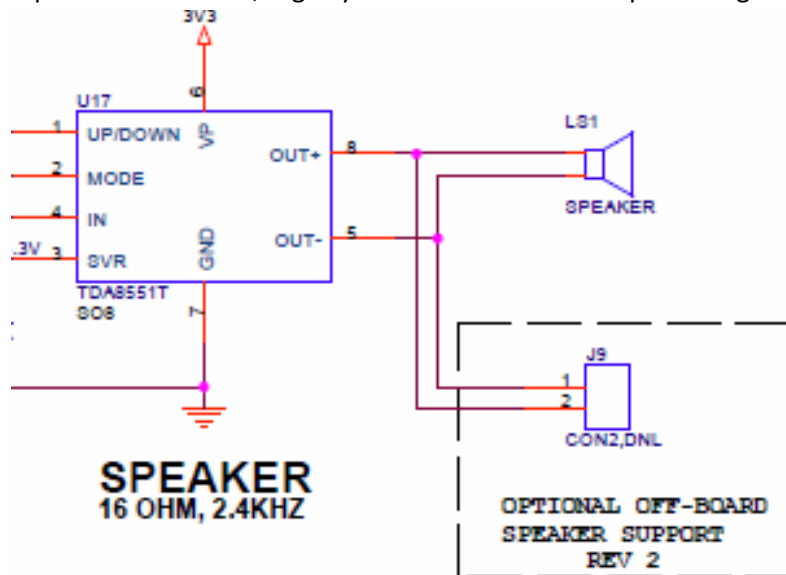
FDI	ENGINEERING CHANGE ORDER		ECO NO: 10-068
			Page 1 of 4
TITLE	DWG NO.	CURRENT REV	NEW REV
uEZ GUI 7	uEZ GUI 7.0 Seiko	1.2	2

BACKGROUND:

- Implement previous rework ECOs, 10-064 & 10-065
- Add optional 2pin SMT header, J9 for off-board speaker support
- Add optional 3pin SMT header, J10 for off-board battery support and associated circuitry
- Add optional USB Host support circuitry to on-board USB connector (for use with Mini-AB and adapter cable)

DESCRIPTION OF CHANGE:

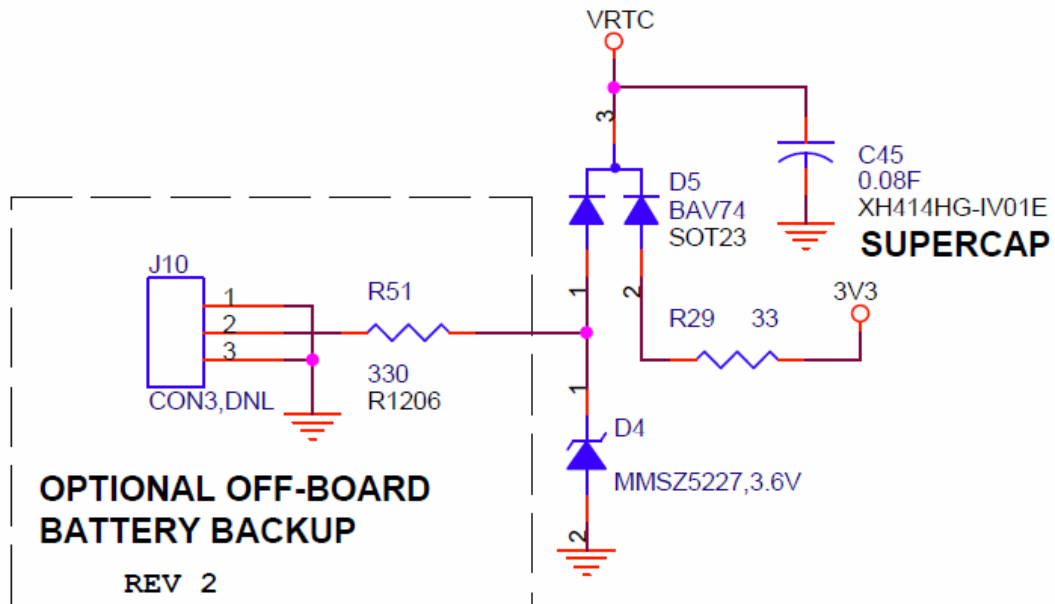
- Implement schematic changes from previous ECOs; 10-064 & 10-065
- Add optional 2pin SMT header J9, Digikey PN: H2219-ND to the speaker signals U17 pin 8 & 5



Reason for change: <ol style="list-style-type: none"> Implement previous ECOs into artwork Add optional offboard speaker header Add optional offboard circuitry Add optional USB Host Circuit 		Disposition/Affectivity	
		Use as is	x
		Rework to ECO	
		Scrap & Rebuild	
		Record Change Only	x
Prepared by:	MH	Date:	12/29/2010
Approved by:		Date:	
Approved by:			

FDI	ENGINEERING CHANGE ORDER		ECO NO: 10-068
			Page 2 of 4
TITLE	DWG NO.	CURRENT REV	NEW REV
uEZ GUI 7	uEZ GUI 7.0 Seiko	1.2	2

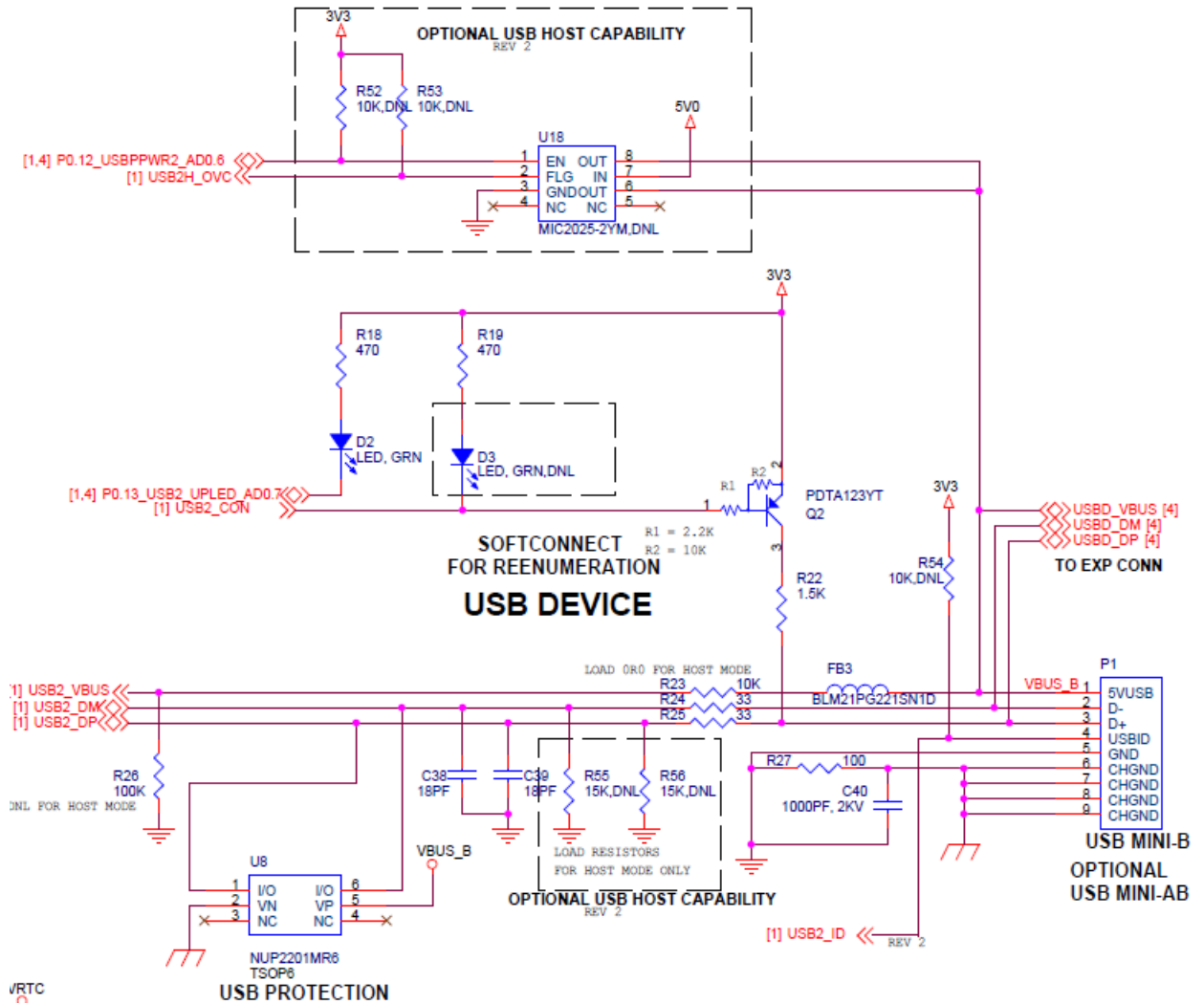
- Add optional 3-pin SMT header J10, Digikey PN: H2220-ND
- Add 330ohm 1/4W series resistor, Digikey PN: P330FTR-ND
- Add 3.6V Zener Diode D4, Digikey PN: MMSZ5227BS-FDICT-ND
- Change diode D5 from BAS416 to BAV74, Digikey PN: 568-1623-2-ND
- Connect battery backup circuit as shown below;



Reason for change: <ol style="list-style-type: none"> Implement previous ECOs into artwork Add optional offboard speaker header Add optional offboard circuitry Add optional USB Host Circuit 	Disposition/Affectivity		
	Use as is	x	
	Rework to ECO		
	Scrap & Rebuild		
	Record Change Only	x	
Prepared by:	MH	Date:	12/29/2010
Approved by:		Date:	
Approved by:			

FDI	ENGINEERING CHANGE ORDER		ECO NO: 10-068
			Page 3 of 4
TITLE	DWG NO.	CURRENT REV	NEW REV
uEZ GUI 7	uEZ GUI 7.0 Seiko	1.2	2

8. Add (DNL parts) MIC2025 (U18), 10K (R52 & R53), and 15K (R55,R56) circuit as shown below;



9. Connect U18 pin 6 & 8 to pin 1 of P1
10. Connect U18 pin 1 to U1 pin 41 (P0.12_USBPPWR2_AD0.6)
11. Connect U18 pin 2 to U1 pin 50 (USB2H_OVC)
12. Add load option for P1 to be USB Mini-AB, PN DX3R005HN2E700 (JAE) – this part is not normally loaded, but is optional for USB Host support configuration

Reason for change: 1. Implement previous ECOs into artwork 2. Add optional offboard speaker header 3. Add optional offboard circuitry 4. Add optional USB Host Circuit	Disposition/Affectivity		
	Use as is	x	
	Rework to ECO		
	Scrap & Rebuild		
	Record Change Only	x	
Prepared by:	MH	Date:	12/29/2010
Approved by:		Date:	
Approved by:			

FDI	ENGINEERING CHANGE ORDER		ECO NO: 10-068
			Page 4 of 4
TITLE	DWG NO.	CURRENT REV	NEW REV
uEZ GUI 7	uEZ GUI 7.0 Seiko	1.2	2

13. Add connection from P1 pin 4 to U1 pin 48 (USB_ID)
14. Add 10K (DNL) pullup, R54, from P1 pin 4 to 3V3
15. Add notes reflecting load options for LPC2478 vs LPC1788

Reason for change: <ol style="list-style-type: none"> 1. Implement previous ECOs into artwork 2. Add optional offboard speaker header 3. Add optional offboard circuitry 4. Add optional USB Host Circuit 		Disposition/Affectivity	
		Use as is	x
		Rework to ECO	
		Scrap & Rebuild	
		Record Change Only	x
Prepared by:	MH	Date:	12/29/2010
Approved by:		Date:	
Approved by:			