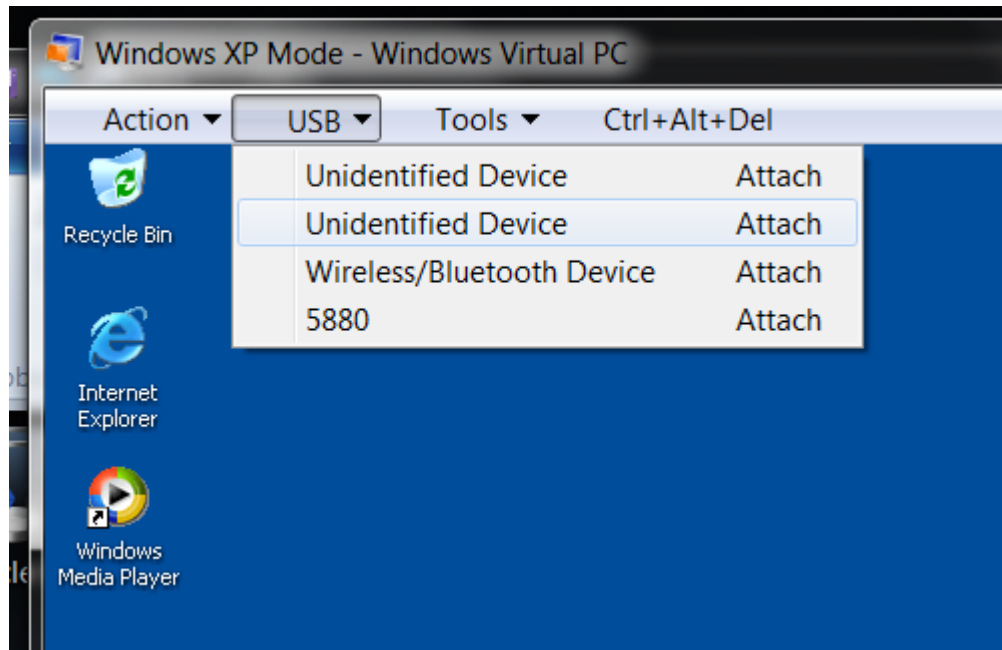
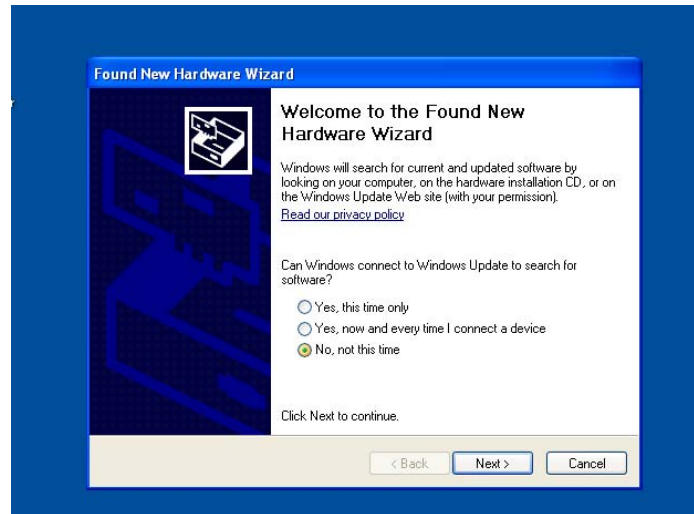


This document will detail the steps necessary to setup the USB-MPC to run under the Windows XP virtual machine included with Windows 7 Professional, Enterprise, and Ultimate editions. This document assumes that the Windows XP virtual machine is already setup.

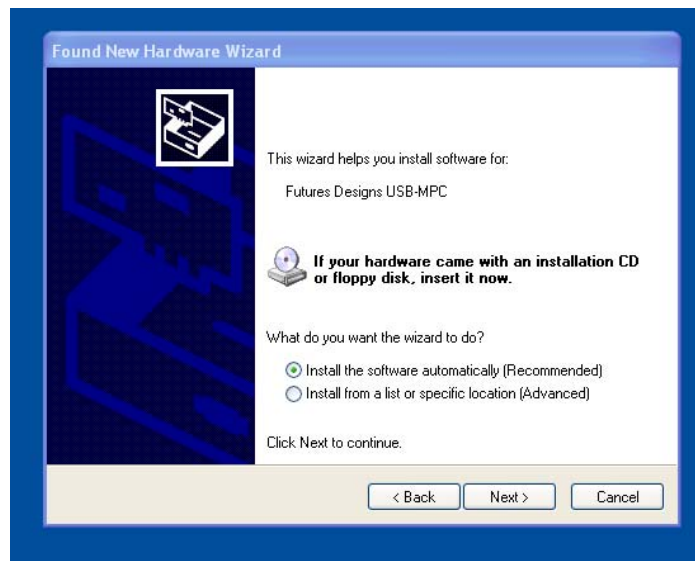
1. In the Windows XP VM got to <http://www.teamfdi.com/> . Click on Support and then MDIO, I2C, SPI bus products and expand the USB-MPC-Kit section.
2. Click the Latest Software Release v1.03d to download the USB-MPC software.
3. After downloading has completed extract the executable and double click to install.
4. Follow the installation procedure.
5. Now that the software is installed we need to attach the USB-MPC to the Windows XP VM. In the VM toolbar select the USB dropdown box. The USB-MPC, as well as some other device, will show as Unidentified Device. Click to attach to the device.



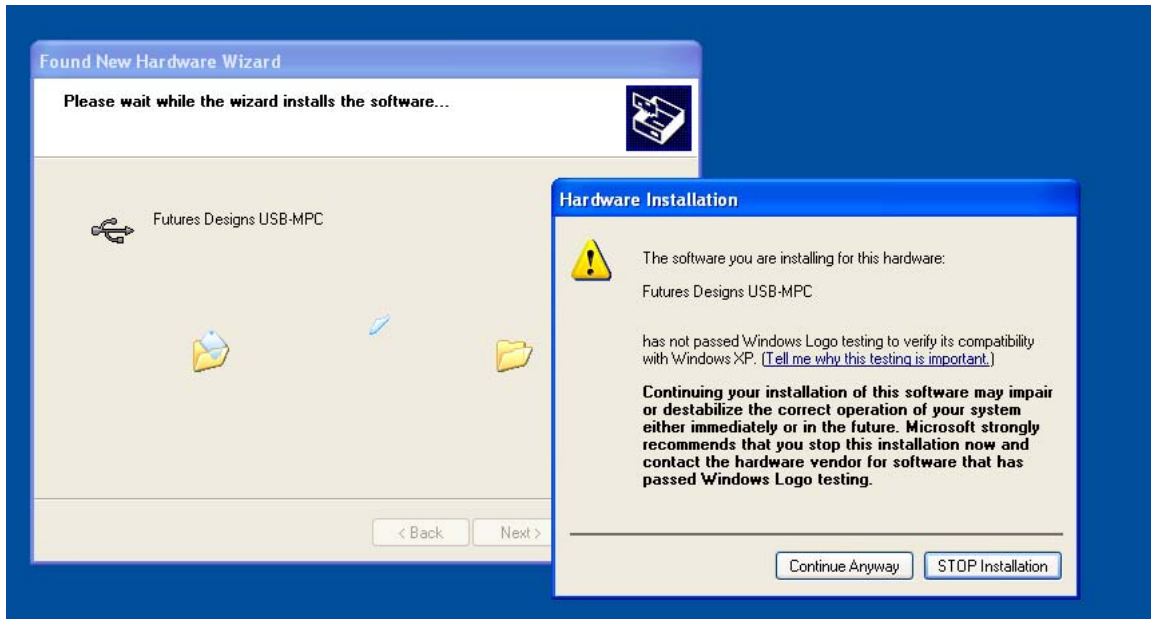
6. After the device is attached Windows XP will start the driver installation process.



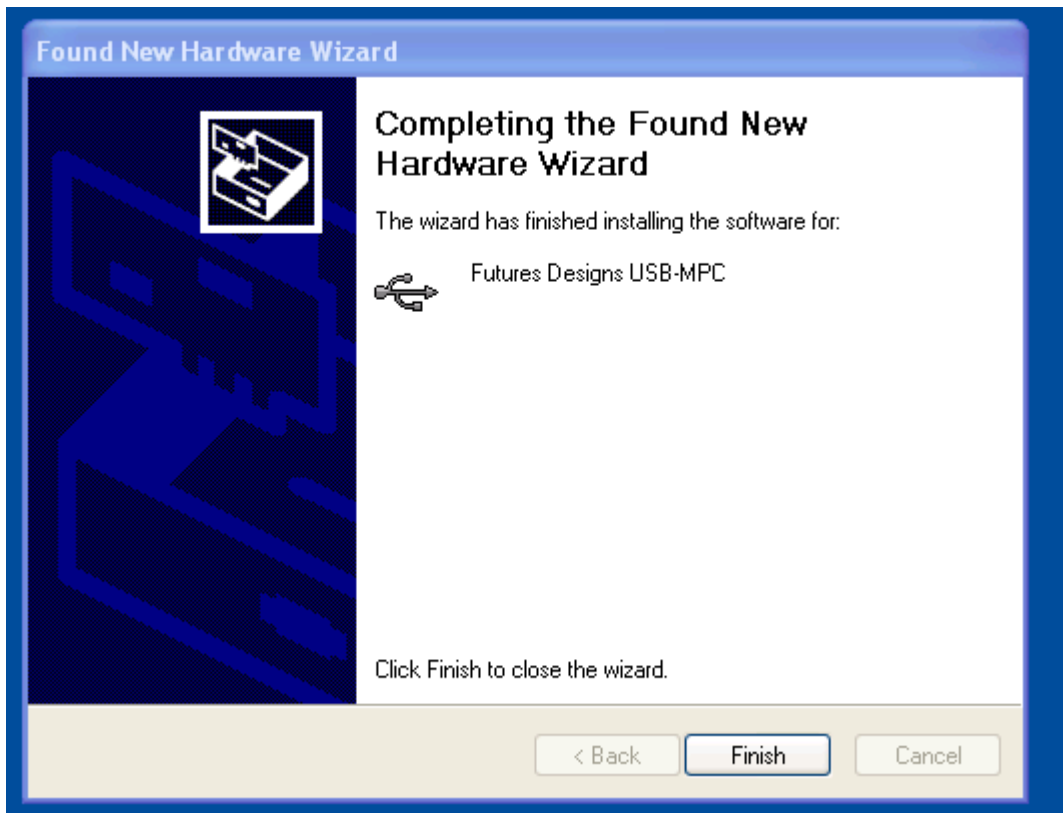
7. Select No, not this time and click next.
8. If the right device is selected then the following will appear.



9. If you do not see Future Designs USB-MPC then the wrong device was selected and you should return to step 5 and repeat with a different Unidentified Device.
10. Select Install the software automatically (Recommended) and click next.
11. Select Continue Anyway when the Hardware Installation dialog box appears.

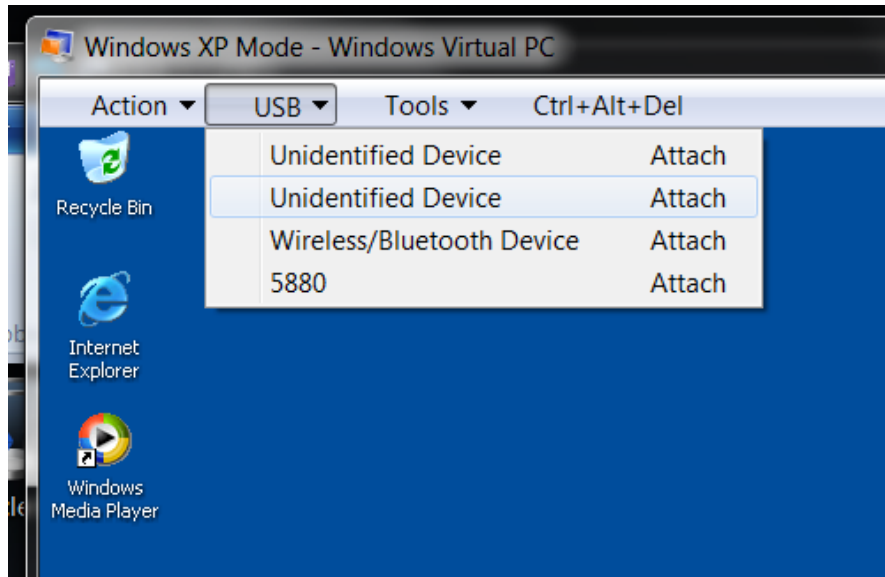


12. Click finish when the installation has completed.

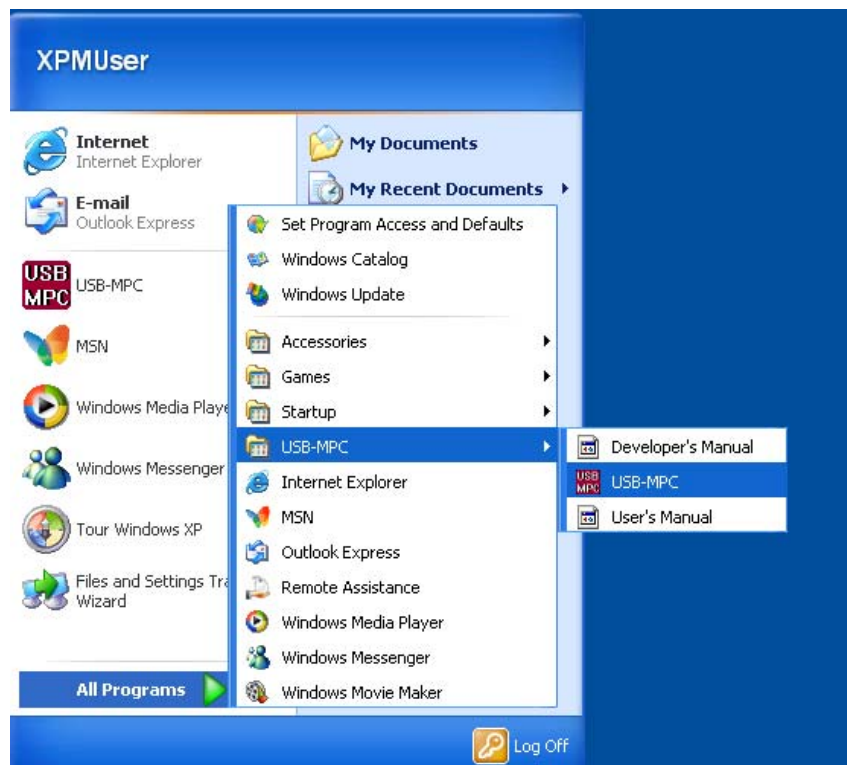


(Note: the following steps will have to be repeated each time the PC is restarted or the USB-MPC is plug into the PC.)

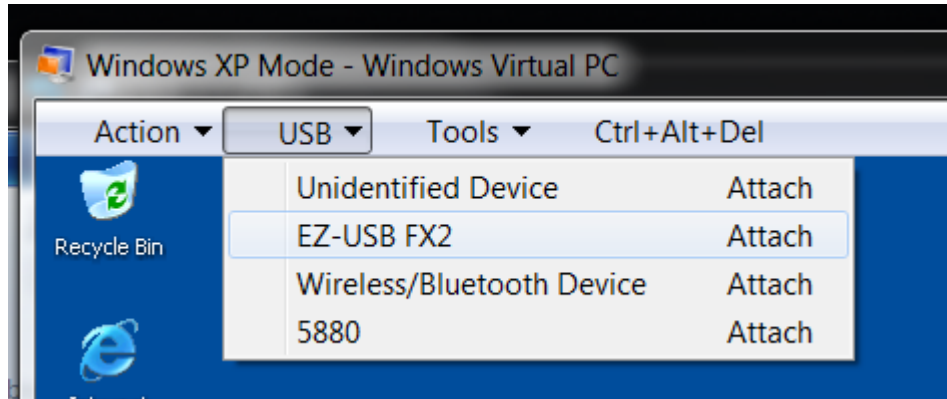
13. If the unit as just been plug back into the PC follow step 14, otherwise skip to step 15.
14. On the VM toolbar click the USB drop box and select the Unidentified Device that corresponds to the USB-MPC. Click to attach to the device.



15. Click the Start button, open All Program and open the USB-MPC application.



16. Click open in the Devices selection group box. (No device need to be connected to the USB-MPC for this step to work so the default will be fine.)
17. When the new window is opened the USB-MPC will be released from the VM so we will need to reattach it. Select USB from the toolbar and look for the device EZ-USB FX2 and click to attach.



18. The USB-MPC can now functional normally on the Windows XP VM until it is disconnected. A reconnect will require step 14-18 to be repeated.